

## 350E / Global

# Steel blasting machine

Technical data	
Working width	350mm
Blasting capacity	Up to 38m <sup>2</sup> /h on steel
Blast wheel power:	11kW
Drive system / speed	Electric / 1 – 15 m/min
Weight	430 kg
Output motor	3 x 400V / 50Hz or 60Hz
Electrical CEE plug	32 Amp / Three phase – 5 pole
Dimensions L / W / H	1350 mm / 650mm / 1100mm
Push / Pull machine	Push
Abrasive consumption	0,2 – 0,5 kg/m <sup>2</sup>
Application	Steel

### Options



Abrasive S460

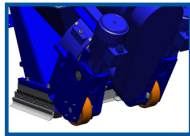


BDC-655

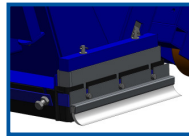
Dimensions L/W/H:  
1730mm / 800mm / 1350mm  
Weight: 600kg

Options / Accessories	
Dustcollector	BDC-655
Abrasive S390 / S460 / SG16 / SG25	999-0390 / 999-0460 / 999-0016 / 999-0025
Suction hose Ø127 (minimum 15m)	492019
Cable coil	E00573
Maintenance kit	On request
Personal safety features	On request

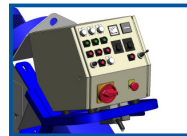
### The innovators in surface preparation!!!!



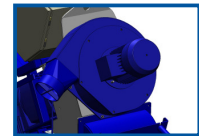
Electrically driven



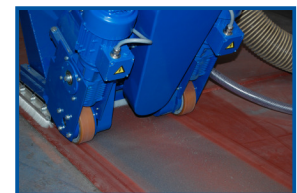
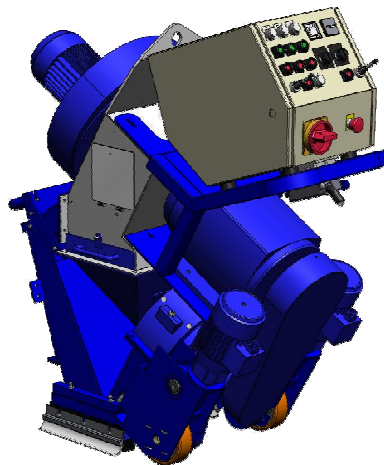
Brush and rubber sealing



User friendly control panel



On board fan unit



### Main assets

- ❖ Closed circuit which is dust free, when connected to an appropriate Blastrac dust collector.
- ❖ Modular construction: allows the machine to be disassembled in only a few parts to pass through a Ø 600mm storage tank access hatch.
- ❖ Electrical drive system with special gear which can also be used for tank slope blasting.
- ❖ Independent drive for each rear wheel.
- ❖ Increased productivity, reduced maintenance costs.
- ❖ Fast and efficient removal of coatings, paint, rust and mill scale.
- ❖ Special electrical safety device, to be able to use the machine for storage tank blasting.
- ❖ Ergonomic design and user friendly control panel.
- ❖ Especially designed to be used on internal tank bottoms & tank roofs and can be used as well on: ship decks, steel plates, platforms, oil platform helpdesks, oil platform walkways, smoke tracks, bridge decks, navy ship decks and steel floors.