

1-5HH

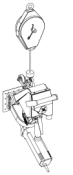
Shot blasting machine

Technical data	
Working width	125mm
Blasting capacity	Up to 12m ² /h on concrete
Motor:	1,4kW / 230V - 50Hz / 16A - Single phase 1,4kW / 110V - 50Hz / 16A - single phase
Working speed	0,2 - 1,3 m/min
Weight	9.5 kg
Dimensions L / W / H	480mm / 195mm / 350mm
Drive system / speed	Manual / N/A
Push / Pull machine	Push
Abrasive consumption	N/A
Surface	Steel / Concrete / Stone / Asphalt

Options



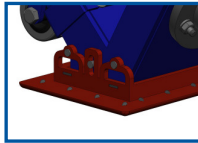
BDC-1112



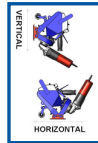
Weight balancer

Options / Accessories	
Dustcollector	BDC-1112 / BDC-1216
Weight balancer	BWB-14
Abrasive S330	999-0330
5m suction hose Ø30	B21793
Personal safety features	On request / See manual

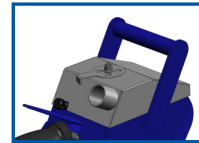
The innovators in surface preparation!!!!



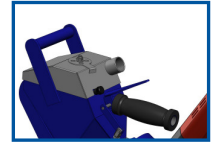
Special foot seal



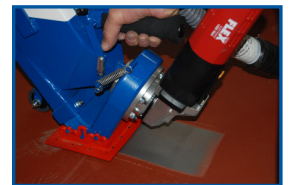
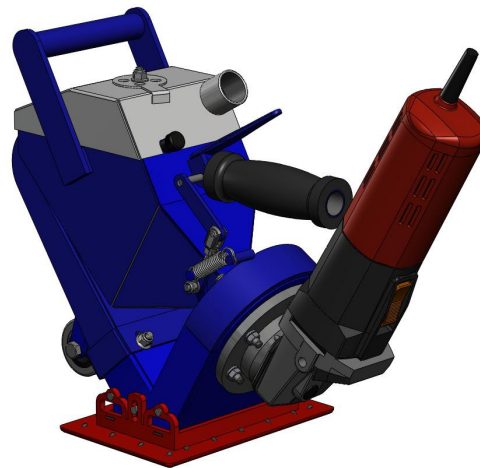
Horizontal and vertical



Dust free separation system



Especially designed handle



Main assets

- ❖ Closed circuit which is dust free, when connected to an appropriate Blastrac dust collector.
- ❖ Universal unit: can be connected to a standard electrical plug (230V).
- ❖ Small and compact, but still very efficient.
- ❖ Can work on very small or hardly accessible areas for example edges.
- ❖ Easy to transport, handle and use.
- ❖ Reliable machine, suitable for rental.
- ❖ Can be used for floor and wall preparation / renovation / maintenance and decorative purposes.